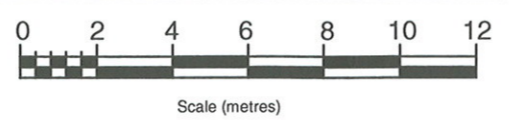


LEGEND

- Extent of proposed packing plant site
- ⊕ Approximate Groundwater Monitoring Well Location
- ⊕ Approximate Borehole Location
- △ Approximate Peizocone Location
- ⊞ Approximate Test Pit Location

REFERENCE: ALAN PRICE & ASSOCIATES, Drawing No. 23132-10A, Sheet 1 of 2, 16 April 2008

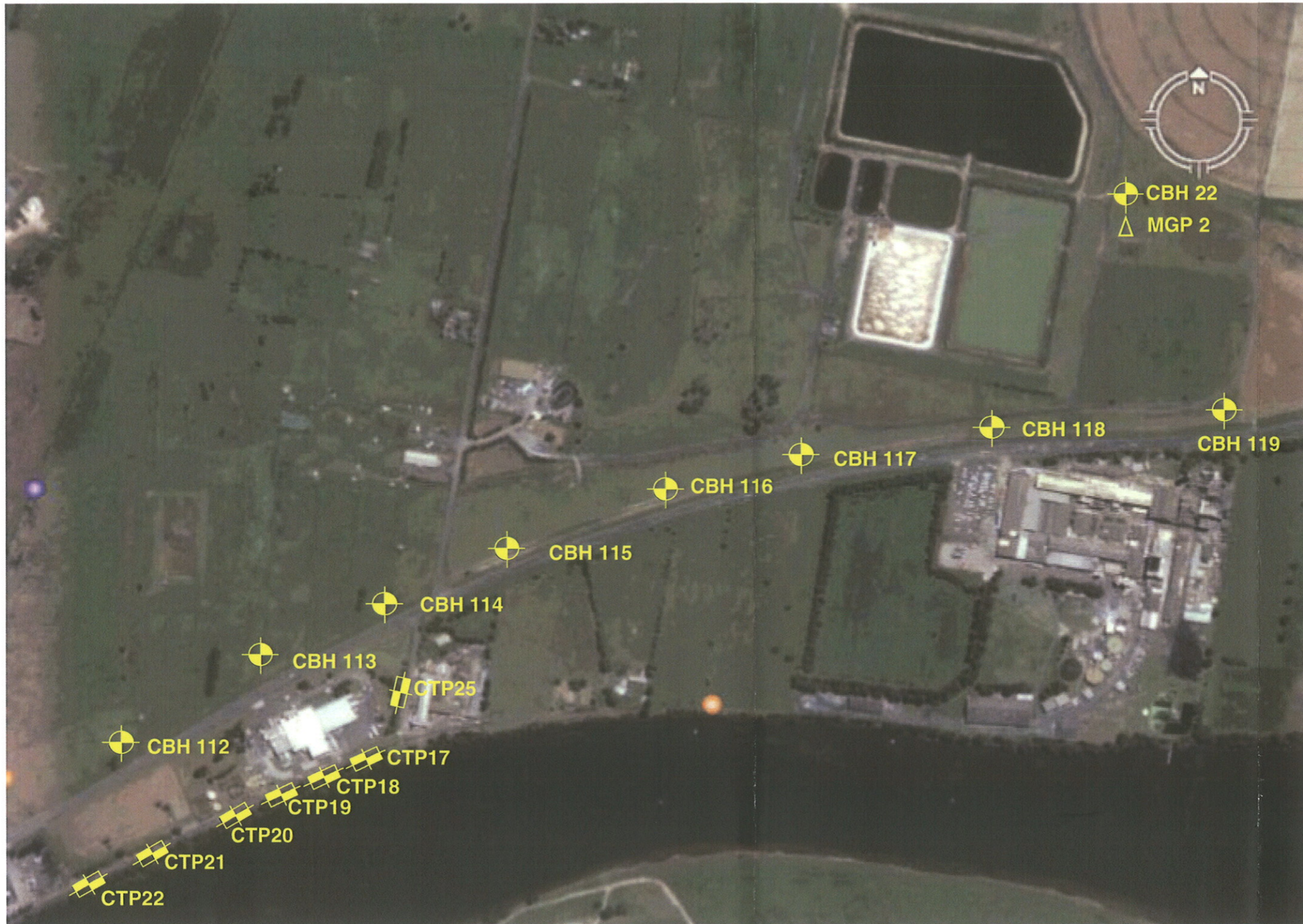
revision	description	drawn	approved	date



drawn	MM
approved	JMF
date	24/6/08
scale	1: 2000 Approx.
original size	A3



client:	MANILDRA GROUP PTY LTD	
project:	PRELIMINARY ENVIRONMENTAL SITE ASSESSMENT AND GEOTECHNICAL INVESTIGATION, SHOALHAVEN STARCHES PLANT, BOLONG ROAD, BOMADERRY, NSW	
title:	APPROXIMATE SAMPLING LOCATIONS	
project no:	ENVIUNAN00111AA-R02	figure no: FIGURE 12B



LEGEND

- ⊕ Approximate Borehole Location
- ⊞ Approximate Testpit Location
- △ Approximate Peizocone Test Location

REFERENCE: Google Earth, <http://earth.google.com/> (accessed 21/5/08)

revision	description	drawn	approved	date	<p>Scale (metres)</p>	drawn	MM	<p>SPECIALISTS IN LIVING AND WORKING PLACES</p>	client:	MANILDRA GROUP PTY LTD		
						approved	JMF		project:	PRELIMINARY ENVIRONMENTAL SITE ASSESSMENT AND GEOTECHNICAL INVESTIGATION, SHOALHAVEN STARCHES PLANT, BOLONG ROAD, BOMADERRY, NSW		
						date	24/6/08		title:	APPROXIMATE SAMPLING LOCATIONS		
						scale	1: 6000 Approx.		project no:	ENVIUNAN00111AA-R02	figure no:	FIGURE 12C
						original size	A3					